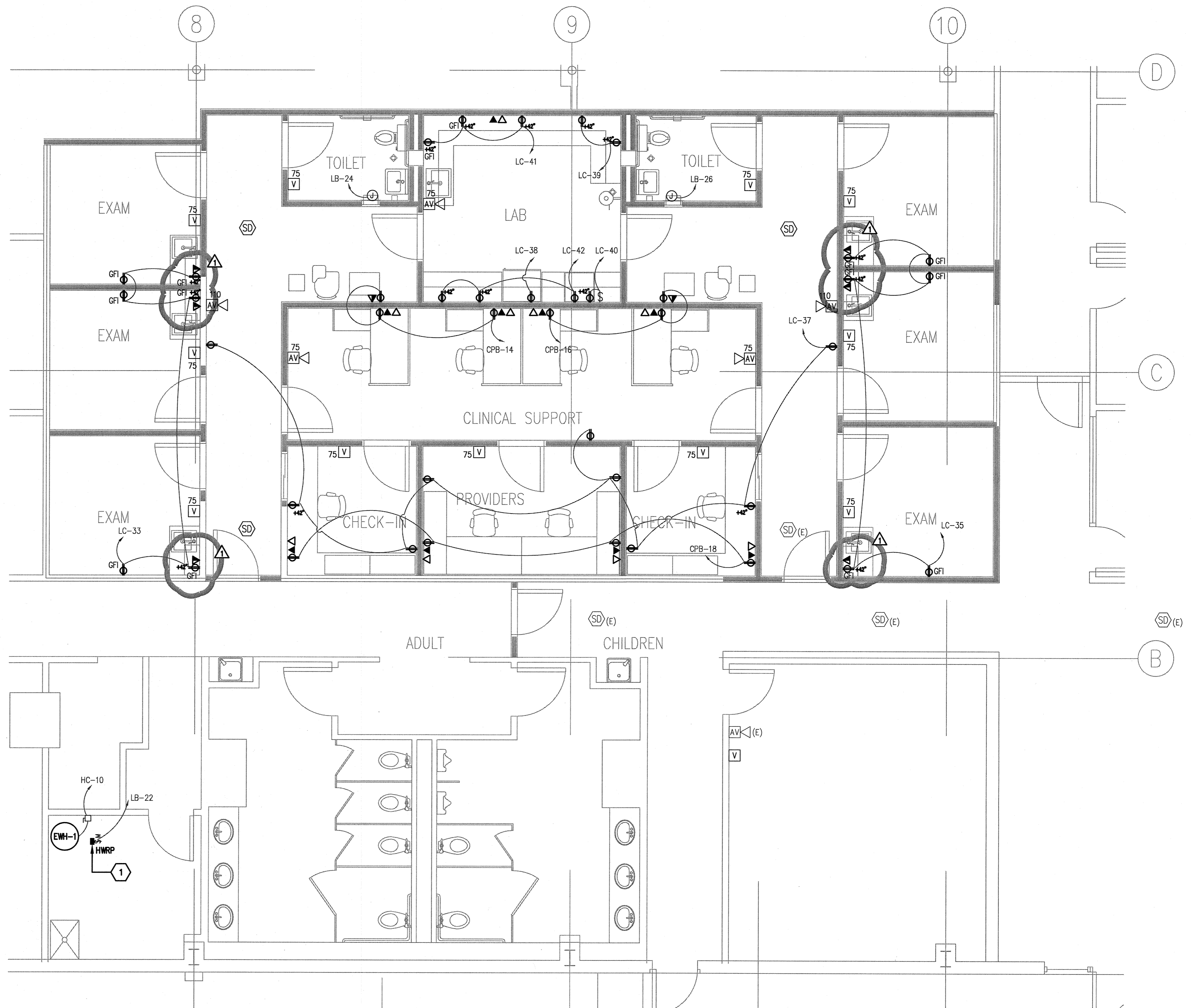


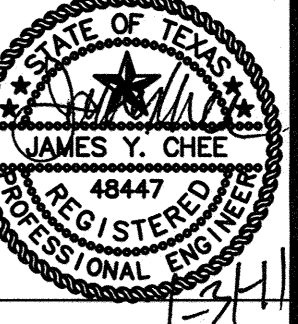
02 KEY PLAN
N.T.S.

KEYED NOTES

1. PROVIDE DIGITAL WALL SWITCH WITH BATTERY BACK-UP AND MANUAL OVERRIDE, 7-DAY ASTRONOMIC TYPE. PROVIDE INTERMATIC #ST01C OR EQUAL BY TORK.



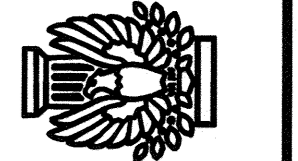
01 ELEECTRICAL - POWER PLAN
1/4" = 1'-0"



ISSUE FOR:
PRICING & PERMIT
11/22/2010
REVISION 1
01/31/2011

**EL CENTRO DE CORAZON
ALTERATIONS**
SOUTHEAST COMMUNITY SERVICE CENTER
5901 LONG DRIVE, HOUSTON, TEXAS 77087
MENTAL HEALTH MENTAL RETARDATION
AUTHORITY OF HARRIS COUNTY

JIM GWIN ARCHITECTS
3100 EDLOR
HOUSTON, TEXAS 77027
EMAIL ADDRESS: jimgwin@jgarch.com
WEBSITE: jimgwin.com
SUITE 370
(713) 628-6862



PROJECT NUMBER
DRAWN BY
APC
CHECKED BY
JBC
SHEET DATE
11/15/2010
**ELECTRICAL -
POWER PLAN**

**REDDING
LINDEN
Burr**
CONSULTING ENGINEERS
Texas Registered Engineering Firm F-3113
801 TRAVIS, SUITE 2000
HOUSTON, TEXAS 77002
WWW.RLBENGINEERS.COM
PH: 713.237.9800 FAX: 713.237.9801