

# DOOR SCHEDULE

# WINDOW SCHEDULE

DOOR MARK	FROM	TO	DOOR TYPE	DOOR MAT'L	FRAME TYPE	SIZE	THICKNESS	UNDER CUT	FIRE RATING	FINISH		HDWR. SET	DETAIL			REMARKS
										DOOR	FRAME		HEAD	JAMB	SILL	
1.347A	CORRIDOR 1.345A	MED. ROOM 1.347A	C	S.C.	H.M.	3'-0" x 7'-0"	1-3/4"	---	---	H.M.	H.M.	40.2	03/A6-1	02/6-1	01A/A6-1	
1.345A	CORRIDOR 1.345A	CORRIDOR 1.400A	F	H.M.	H.M.	2'-3"-6" x 7'-0"	1-3/4"	---	---	H.M.	H.M.	20.1	05/A6-1	04/6-1	01A/A6-1	NOTES 1, & 3
1.356	CORRIDOR 1.345A	INTERVIEW 1	B	H.M.	H.M.	3'-6" x 7'-0"	1-3/4"	---	---	H.M.	H.M.	15.1	03/A6-1	02/6-1	01A/A6-1	
1.352	CORRIDOR 1.345A	INTERVIEW 2	B	H.M.	H.M.	3'-6" x 7'-0"	1-3/4"	---	---	H.M.	H.M.	15.1	03/A6-1	02/6-1	01A/A6-1	
1.350	CORRIDOR 1.345A	INTERVIEW 3	B	H.M.	H.M.	3'-6" x 7'-0"	1-3/4"	---	---	H.M.	H.M.	15.1	03/A6-1	02/6-1	01A/A6-1	
1.345B	OUTSIDE (DOCK)	VESTIBULE 1.345.1	G	H.M.	H.M.	12'-0" x 7'-0"	---	---	---	ALUM	ALUM	15.1	21/A6-1	16&15/A6-1	20/A6-1	NOTE 6
1.345C	VESTIBULE 1.345.1	INTAKE LOBBY 1.345A	G	H.M.	H.M.	12'-0" x 7'-0"	---	---	---	ALUM	ALUM	15.1	21/A6-1	16&15/A6-1	20/A6-1	NOTE 6
1.340	CORRIDOR 1.376	SECLUSION A 1.340	C	H.M.	H.M.	3'-6" x 7'-0"	1-3/4"	VERIFY	---	H.M.	H.M.	78.1	25/A6-1	25/6-1	24/A6-1	NOTE 4
1.339	CORRIDOR 1.376	SECLUSION B 1.339	C	H.M.	H.M.	3'-6" x 7'-0"	1-3/4"	VERIFY	---	H.M.	H.M.	78.1	25/A6-1	25/6-1	24/A6-1	NOTE 4
1.336A	CORRIDOR 1.376	DAY ROOM 1.336	D	H.M.	H.M.	2'-3"-6" x 7'-0"	1-3/4"	---	---	H.M.	H.M.	20.1	05/A6-1	04/6-1	01A/A6-1	NOTES 1, & 3
1.337	CORRIDOR 1.376	STORAGE 1.337	A	S.C.	H.M.	3'-0" x 7'-0"	1-3/4"	---	---	H.M.	H.M.	40.1	03/A6-1	02/6-1	01A/A6-1	
1.324A	CORRIDOR 1.325	NURSES AREA 1.324	B	S.C.	H.M.	3'-0" x 7'-0"	1-3/4"	---	---	H.M.	H.M.	40.2	03/A6-1	02/6-1	01A/A6-1	NOTE 3
1.324B	DAYROOM 1.336	NURSES AREA 1.324	B	H.M.	H.M.	3'-0" x 7'-0"	1-3/4"	---	---	H.M.	H.M.	40.2	03/A6-1	02/6-1	01A/A6-1	
1.326B	DAYROOM 1.336	SOUTH DAY AREA 1.326	D	H.M.	H.M.	2'-3"-6" x 7'-0"	1-3/4"	---	---	H.M.	H.M.	20.1	05/A6-1	04/6-1	01A/A6-1	NOTE 1
1.325	DAYROOM 1.336	CORRIDOR 1.325	D	H.M.	H.M.	2'-3"-6" x 7'-0"	1-3/4"	---	---	H.M.	H.M.	20.1	05/A6-1	04/6-1	01A/A6-1	
1.318	CORRIDOR 1.325	STAFF STATION 1.318	B	S.C.	H.M.	3'-0" x 7'-0"	1-3/4"	---	---	H.M.	H.M.	40.2	03/A6-1	02/6-1	01A/A6-1	NOTE 3
1.509	CORRIDOR 1.512	OFFICE 1.509	A	S.C.	H.M.	3'-0" x 7'-0"	1-3/4"	---	45 MIN.	H.M.	H.M.	50.2	03/A6-1	02/6-1	01A/A6-1	
1.511D	CORRIDOR 1.511B	CONF./TRAINING 1.511D	A	S.C.	H.M.	3'-0" x 7'-0"	1-3/4"	1/2"	---	H.M.	H.M.	37.1	03/A6-1	02/6-1	01A/A6-1	
1.511C	CORRIDOR 1.511B	CONF./TRAINING 1.511C	A	S.C.	H.M.	3'-0" x 7'-0"	1-3/4"	1/2"	---	H.M.	H.M.	37.1	03/A6-1	02/6-1	01A/A6-1	
1.511B	CORRIDOR 1.511B	EXIT CORRIDOR	A	H.M.	H.M.	3'-0" x 7'-0"	1-3/4"	1/2"	3 HR.	H.M.	H.M.	88.1	03/A6-1	02/6-1	01A/A6-1	
1.511A	CORRIDOR 1.511B	FILE STORAGE 1.511A	E	S.C.	H.M.	3'-0" x 7'-0"	1-3/4"	1/2"	60 MIN.	H.M.	H.M.	40.2	03/A6-1	02/6-1	01A/A6-1	NOTE 7
X1.511A	OFFICE 1.509	FILES 1.508B	EXISTING	H.M.	H.M.	3'-0" x 7'-0"	1-3/4"	1/2"	60 MIN.	H.M.	H.M.	40.2	03/A6-1	02/6-1	01A/A6-1	
1.508B	OFFICE 1.502	FILE STORAGE 1.511A	A	S.C.	H.M.	3'-0" x 7'-0"	1-3/4"	1/2"	60 MIN.	H.M.	H.M.	40.1	03/A6-1	02/6-1	01A/A6-1	
1.508A	OFFICE 1.512	OFFICE 1.508A	A	S.C.	H.M.	3'-0" x 7'-0"	1-3/4"	1/2"	60 MIN.	H.M.	H.M.	50.1	03/A6-1	02/6-1	01A/A6-1	

**1. DOOR:**  
 SW - SOLID WOOD  
 HM - HOLLOW METAL  
 SC - SOLID CORE  
 HC - HOLLOW CORE  
 AL - ALUMINUM 4 GLASS  
 WG - SOLID WOOD 4 GLASS  
 INS - INSULATED

**2. FINISH:**  
 STN - STAIN  
 PTD - PAINT  
 ANOD - ANODIZED  
 PLAM - PLASTIC LAMINATE  
 AP - ALUMINUM PAINTED  
 SS - STAINLESS STEEL

**3. FRAME:**  
 FF - FLUSH FRAME  
 HM - HOLLOW METAL  
 WD - SOLID WOOD  
 A - ALUMINUM

1. THE FOLLOWING NOTES APPLY TO ALL HOLLOW METAL FRAMES:  
 A. ALL HOLLOW METAL FRAMES IN MASONRY OPENINGS SHALL BE FULLY GROUTED.  
 B. ALL HOLLOW METAL FRAMES SHALL BE FIELD PAINTED.  
 C. HOLLOW METAL FRAMES TO BE WELDED, KNOCK DOWN FRAMES ARE NOT PERMITTED.  
 D. ALL DOOR JAMB ANCHORS SHALL BE VERIFIED WITH PLAN CONDITIONS AND SPECIFICATIONS.  
 E. LABELLED DOOR AND FRAMES SHALL CONFORM TO NFPA NO. 80.  
 F. PAINTED KNOBS SHALL BE PROVIDED FOR ALL DOORS FROM CORRIDORS TO ELECTRICAL CLOSETS, MECHANICAL ROOMS, TELEPHONE CLOSETS, AND STAIR PENHOUSES.  
 G. ALL FRAMES ARE "WRAP AROUND" UNLESS NOTED.

2. ALL DOORS ARE TO BE INSTALLED WITH ADA COMPLIANT HARDWARE.  
 3. REFER TO INTERIOR FINISHES DRAWINGS FOR PAINTED DOORS COLORS.  
 4. PAINTED FRAMES TO BE PAINTED PER INTERIOR FINISH SCHEDULE.

1. ELECTRICAL MAGNETIC LOCK INTEGRAL WITH FIRE ALARM.  
 2. ELECTRICAL MAGNETIC LOCK INTEGRAL WITH SECURITY SYSTEM.  
 3. ELECTRICAL MAGNETIC LOCK INTEGRAL WITH CARD READER.  
 4. INTEGRATE WALL PADDING ON INSIDE OF THIS DOOR. COORDINATE WITH PADDING MANUF. INSULATION REQUIREMENTS.  
 5. EXISTING DOOR AND FRAME - FIELD VERIFY SIZE AND HARDWARE PROVIDE HARDWARE TO CORRESPOND TO HARDWARE SET. REPLACE DOOR AND FRAME IF NECESSARY, PAINT DOOR AND FRAME BOTH SIDES AS SCHEDULED.  
 6. VERIFY WITH MHMRA FOR CARD READER / SECURITY REQUIREMENTS FOR THIS DOOR PRIOR TO FINAL INSTALLATION.  
 7. MAGNETIC HOLD OPEN, INTEGRATED WITH FIRE ALARM.

## LEGEND TO DOOR SCHEDULE

## DOOR SCHEDULE GENERAL NOTES

## DOOR SCHEDULE REMARKS

SET #16.1 - Doors: 1.356, 1.352, 1.350	SET #10.1 - Flus Doors: 1.337, 1.508B	SET #78.1 - Seclusion Doors: 1.340, 1.339
3 Hinges T2714 1/2 X 4 1/2 240 MC 1 Passage Set 8215 LNJ 240 SA 1 Floor stop F365 US24D MC 3 Door Silencers S1M MC	3 Hinges T42714 1/2 X 4 1/2 240 MC 1 Stormlock LC 8204 LNJ 240 SA 1 Mortise Cylinder 16-74 STD 626 BE 1 Floor stop F365 US24D MC 3 Door Silencers S1M MC	3 Hinges T443786 5 X 4 1/2 240 MC 1 Passage Set 7815 PT 32D SA 1 Floor stop F365 US24D MC 3 Door Silencers S1M MC
SET #28.1 - Double egress security doors Doors: 1.308B, 1.345A, 1.308A, 1.325	SET #20.2 - corridor to file storage Doors: 1.347A, 1.324A, 1.324B, 1.318, 1.511A, X1.511A (Door 1.511A to have 4 hinges total)	SET #88.1 - Exit Corridor / Corridor Doors: 1.511B
4 Hinges T443786 5 X 4 1/2 240 MC 2 Magnalock M62 US24D SN 2 Push Plate P305 US24D MC 1 Power Supply BPS-4-2 CR	3 Hinges T42714 1/2 X 4 1/2 240 MC 1 Stormlock LC 8204 LNJ 240 SA 1 Clear S301 689 YA 1 Floor stop F365 US24D MC 1 Smoke Seal MCKSS8 BL 25 689 YA 3 Door Silencers S1M MC	1 Exit Device T443786 4 1/2 X 4 1/2 NRP 32D MC 1 Mortise Cylinder 16-74 STD 240 SA 1 Clear S301 689 YA 1 Floor stop F365 US24D MC 1 Smoke Seal MCKSS8 BL 25 689 YA 3 Door Silencers S1M MC
NOTE: Card Reader by Security	SET #90.1 - Entry Automatic Sliding doors Doors: 1.511D, 1.511C	SET #90.1 - Corridor to office Doors: 1.508A
	3 Hinges T2714 1/2 X 4 1/2 240 MC 1 Stormlock LC 8204 LNJ 240 SA 1 Mortise Cylinder 16-74 STD 626 BE 1 Wall Stop W342 US24D MC 3 Door Silencers S1M MC	3 Hinges T42714 1/2 X 4 1/2 240 MC 1 Office lockset LC 8205 LNJ 240 SA 1 Mortise Cylinder 16-74 STD 626 BE 1 Floor stop F365 US24D MC 3 Door Silencers S1M MC
SET #46.1 - Flus Doors: 1.337, 1.508B	SET #90.2 - corridor to office Doors: 1.509	SET #90.1 - Corridor to office Doors: 1.509
3 Hinges T42714 1/2 X 4 1/2 240 MC 1 Stormlock LC 8204 LNJ 240 SA 1 Mortise Cylinder 16-74 STD 626 BE 1 Floor stop F365 US24D MC 3 Door Silencers S1M MC	3 Hinges T42714 1/2 X 4 1/2 240 MC 1 Office lockset LC 8205 LNJ 240 SA 1 Mortise Cylinder 16-74 STD 626 BE 1 Clear S301 689 YA 1 Floor stop F365 US24D MC 3 Door Silencers S1M MC	3 Hinges T42714 1/2 X 4 1/2 240 MC 1 Office lockset LC 8205 LNJ 240 SA 1 Mortise Cylinder 16-74 STD 626 BE 1 Clear S301 689 YA 1 Floor stop F365 US24D MC 3 Door Silencers S1M MC

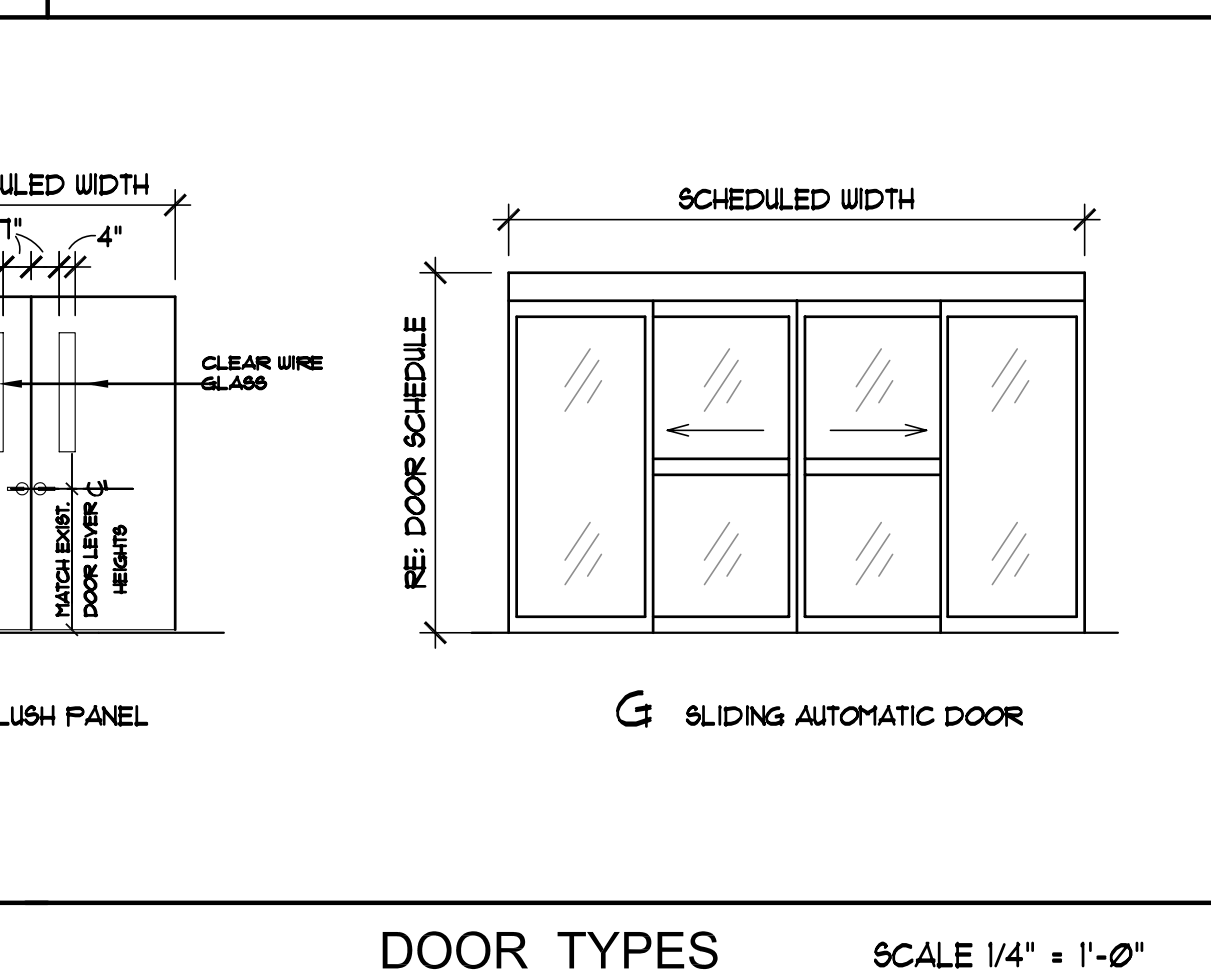
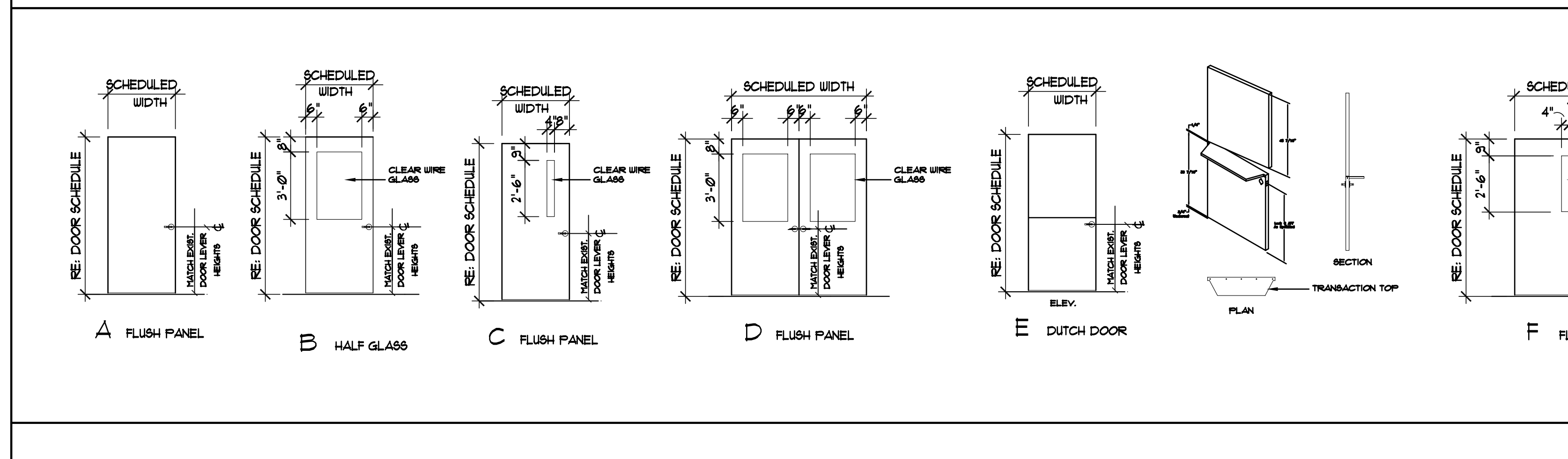
## GENERAL NOTE: HORIZONTAL SLIDING EGRESS DOORS.

- DOORS SHALL BE POWER OPERATED AND SHALL BE CAPABLE OF BEING OPERATED MANUALLY IN THE EVENT OF POWER FAILURE.
- DOORS SHALL BE OPENABLE BY A SIMPLE METHOD FROM BOTH SIDES WITHOUT SPECIAL KNOWLEDGE OR EFFORT.
- DOORS SHALL BE OPENABLE WITH A FORCE NOT TO EXCEED 15 POUNDS WHEN A FORCE OF 250 POUNDS IS APPLIED PERPENDICULAR TO THE DOOR ADJACENT TO THE OPERATING DEVICE.
- THE DOOR ASSEMBLY SHALL HAVE AN INTEGRATED STANDBY POWER SUPPLY OR OTHERWISE CONNECTED TO EMERGENCY POWER SYSTEM.
- THE DOOR ASSEMBLY POWER SUPPLY SHALL BE ELECTRICALLY SUPERVISED.
- THE DOOR SHALL OPEN TO THE MINIMUM REQUIRED WIDTH WITHIN 10 SECONDS AFTER ACTIVATION OF THE OPERATING DEVICE.

- (A) 1/4" LEXAN GLASS ON BOTH SIDES OF INTEGRAL OPERABLE LOUVERS
- (B) 1" THICK CLEAR TEMPERED INSULATED GLASS
- (C) 1" THICK CLEAR TEMPERED INSULATED GLASS
- (D) 1/4" THICK CLEAR LEXAN

## DOOR HARDWARE SETS

## AUTOMATIC SLIDING DOOR NOTES



DATE	REMARKS
06-08-09	OWNER PROJECT REVIEW
06-15-09	ISSUE FOR CONSTRUCTION

REVISIONS	
NO.	REMARKS

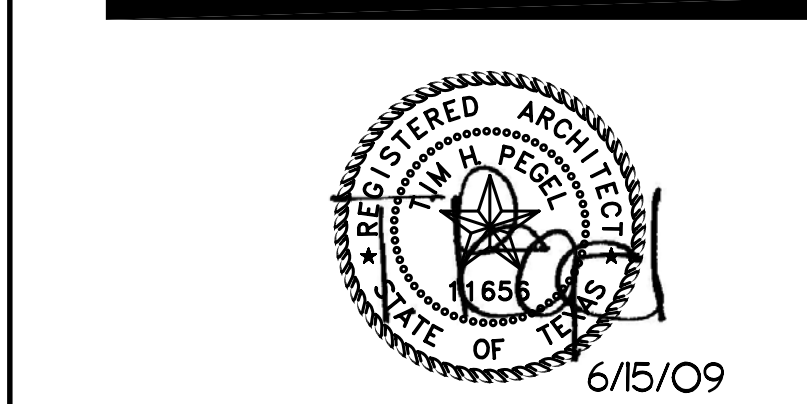
**bpm architects**

BROWNE PENLAND MCGREGOR ARCHITECTS, INC.  
 520 POST OAK BOULEVARD  
 SUITE 880  
 HOUSTON, TEXAS 77027  
 713 850-1733 PHONE  
 713 850-0833 FAX  
 www.bpmarch.com  
 © COPYRIGHT 2008

**MHMRA**  
 OF HARRIS COUNTY

RENOVATIONS TO THE  
**MHMRA**  
 NEUROPSYCHIATRIC FACILITY  
 AT 1502 TAUB LOOP  
 MHMRA Project #: 09/0029  
 1502 TAUB LOOP  
 HOUSTON, TEXAS 77030

## DOOR AND WINDOW SCHEDULES DETAILS, AND NOTES



PROJECT NO: 09106.00	DRAWING NO: A9-1
PHASE: CONSTRUCTION	
DATE: 06-15-09	