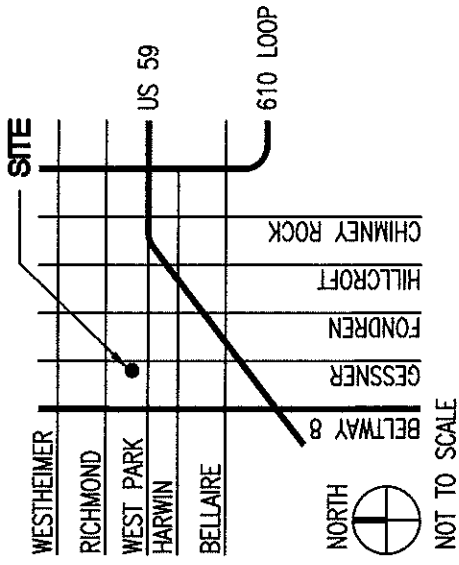


**RESTROOM RENOVATION  
AT  
3600 SOUTH GESSNER, suite 110, HOUSTON, TEXAS  
MHMRA**

**INDEX OF DRAWINGS**

- 0 INDEX OF DRAWINGS
- 01 DEMOLITION PLAN
- 02 NEW PROPOSED PLAN
- 02B REFLECTED CEILING PLAN
- 03 KEY PLAN NOTES
- 04 INTERIOR ELEVATIONS
- 04.1 INTERIOR ELEVATIONS
- 05 FINISH PLAN
- 06 MILLWORK DETAIL
- 07 PLUMBING RISER DIAGRAM

**VICINITY MAP**



PROJECT:

**MH-MRA**  
**3600 S. GESSNER, SUITE 110**  
3600 SOUTH GESSNER, SUITE 110, HOUSTON, TEXAS



**JIM GWIN ARCHITECTS, INC.**  
**3100 EDLOE**  
**HOUSTON, TEXAS 77027**  
*SUITE 520*  
(713) 529-6262

SUPPLEMENTAL DRAWING FOR:

SHEET NO.

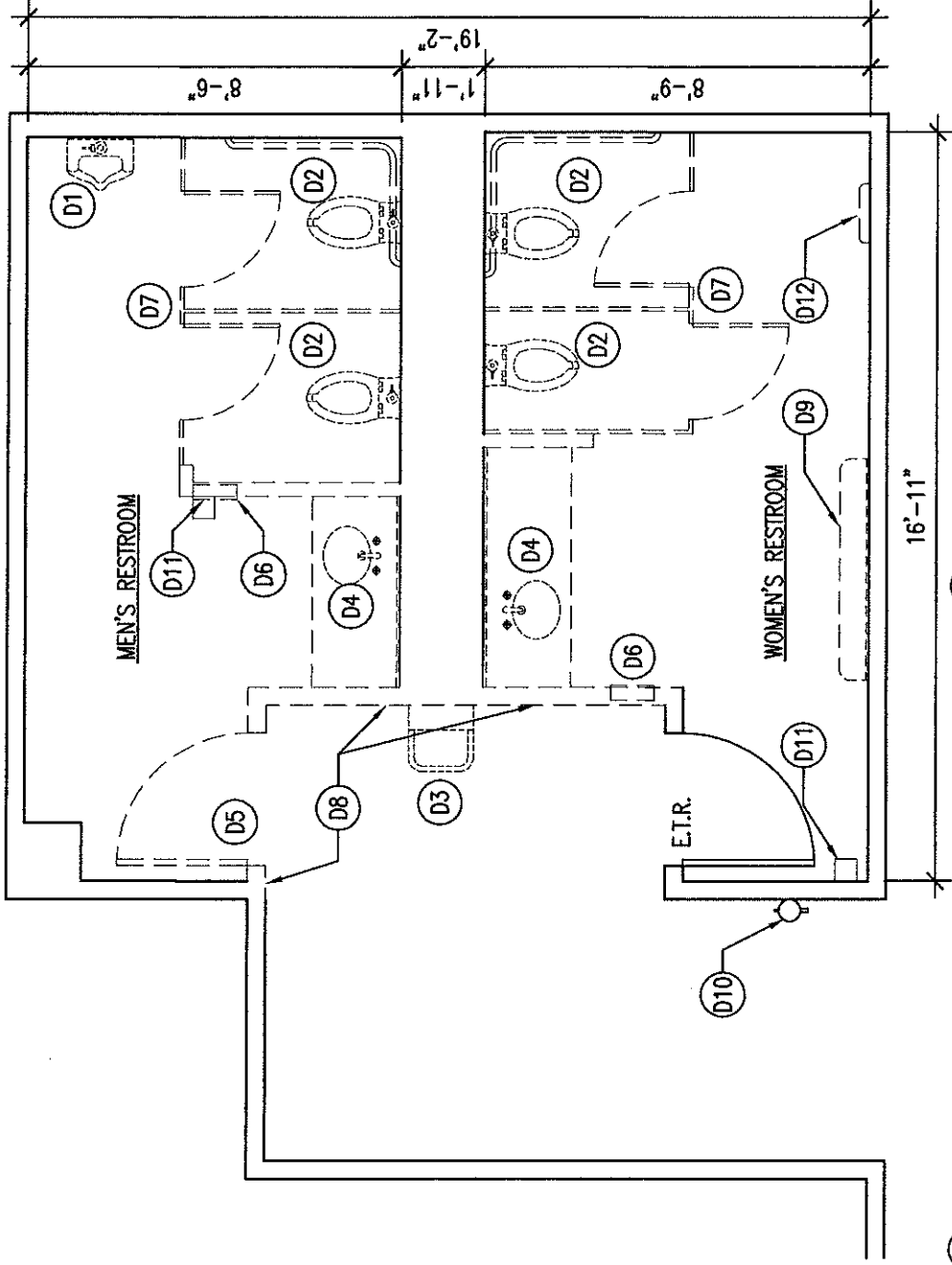
**0**

DATE:

**06/03/2009**

DRAWING NO.

**0**



- (D1) REMOVE EXISTING URINAL. CAP LINES AND PATCH WALL.
- (D2) REMOVE AND RELOCATED EXISTING WATER CLOSET.
- (D3) REMOVE EXISTING DRINKING FOUNTAIN. CAP LINES AND PATCH WALL.
- (D4) REMOVE EXISTING HAND LAVATORY, MILLWORK, & WALL MOUNTED MIRROR. CAP LINES AND PATCH WALL.
- (D5) REMOVE AND RELOCATED EXISTING DOOR AND FRAME.
- (D6) REMOVE EXISTING PAPER DISPENSER.
- (D7) REMOVE EXISTING TOILET PARTITION.
- (D8) REMOVE AND RELOCATE EXISTING WALL.
- (D9) REMOVE EXISTING SHELF & MIRROR.
- (D10) REMOVE AND RELOCATE EXISTING FIRE EXTINGUISHER.
- (D11) REMOVE AND RELOCATE EXISTING WALL MOUNTED AIR FRESHNER DEVICE.
- (D12) REMOVE AND RELOCATE EXISTING WALL MOUNTED TOILET SEAT COVER DISPENSER.

# 01 DEMOLITION RESTROOM PLAN

SCALE : 1/4" = 1'-0"

PROJECT:

**MMRA**  
**3600 S. GESSNER, SUITE 110**  
 3600 SOUTH GESSNER, SUITE 110, HOUSTON, TEXAS

**JIM GWIN ARCHITECTS, INC.**  
 3100 EDLOE  
 HOUSTON, TEXAS 77027



SUPPLEMENTAL DRAWING FOR:

SHEET NO.

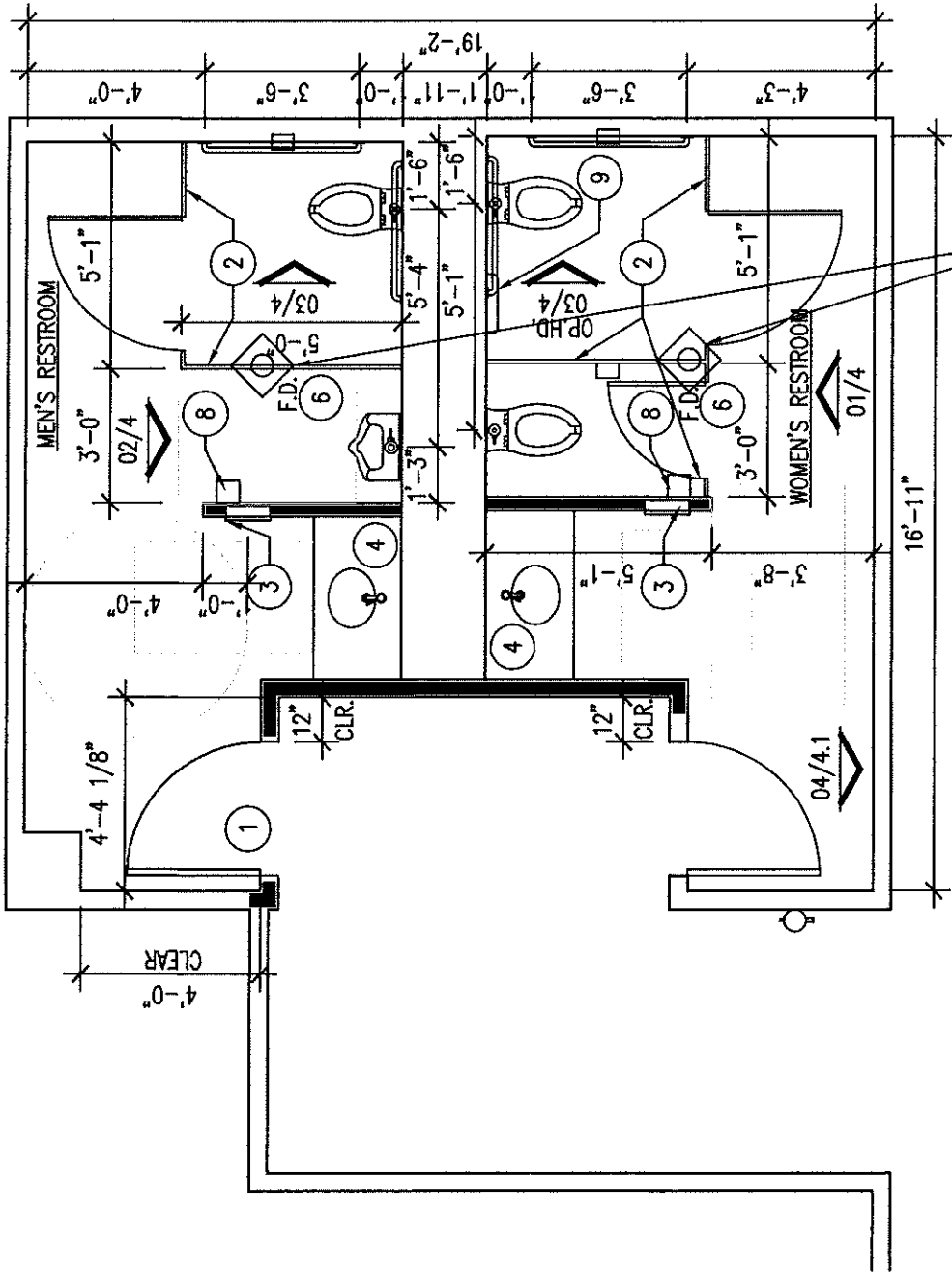
1

DATE:

06/02/2009

DRAWING NO.

01



SEE DRAWING 03 FOR KEY PLAN NOTES.

NEW 3" FLOOR DRAIN.  
 PROVIDE APPROVED TRAP  
 "WET SEAL"

E.I.R.: EXISTING TO REMAIN.

# 02 NEW RESTROOM PLAN

SCALE : 1/4" = 1'-0"

PROJECT:

**MMFA**  
**3600 S. GESSNER, SUITE 110**  
 3600 SOUTH GESSNER, SUITE 110, HOUSTON, TEXAS

**JIM GWIN ARCHITECTS, INC.**  
 3100 EDLOE  
 HOUSTON, TEXAS 77027



SUPPLEMENTAL DRAWING FOR:

SHEET NO.

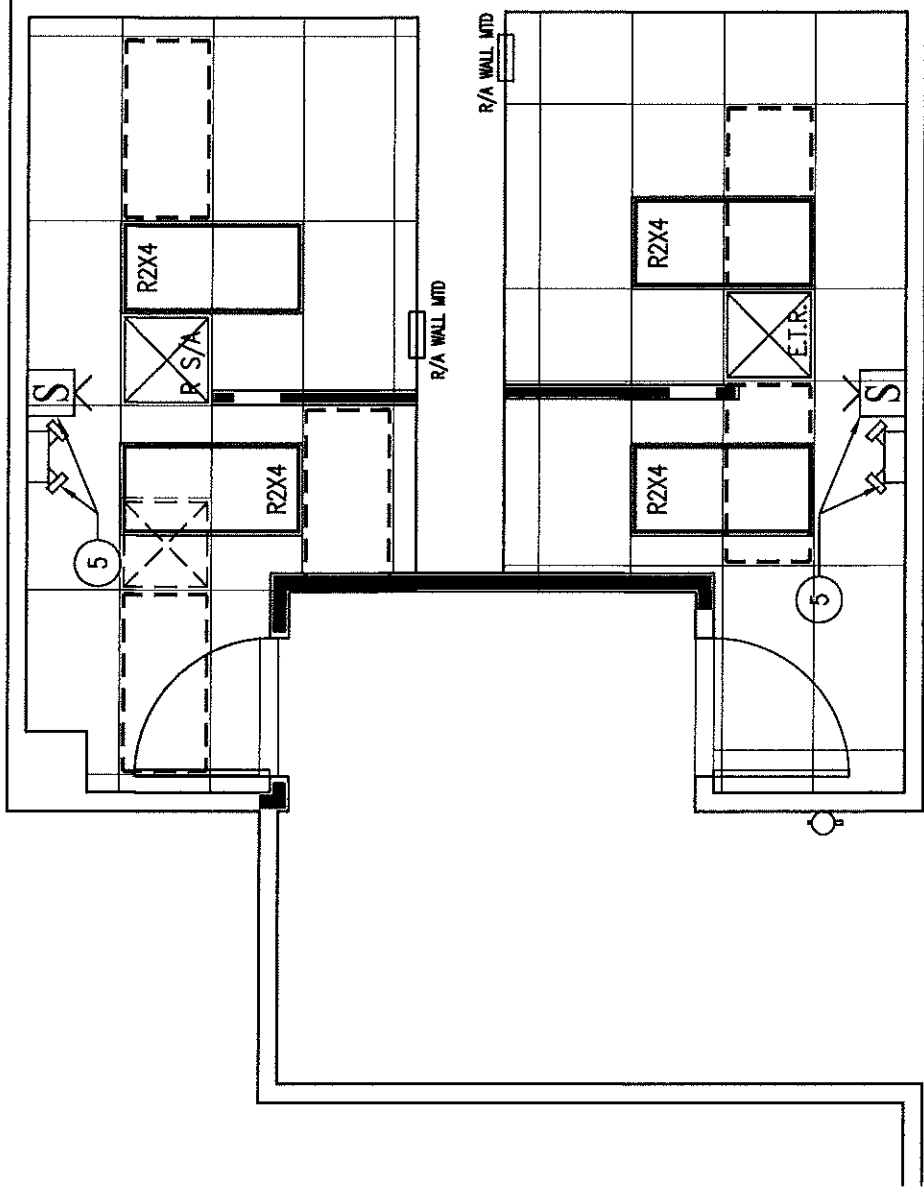
**2**

DRAWING NO.

DATE:  
**6/02/2009**

**02**

MEN'S RESTROOM



WOMEN'S RESTROOM

**NOTE:**

- A. MODIFY SUSPENSION GRID AS SHOWN & PROVIDE NEW TILES, TO MATCH EXISTING, AS REQUIRED.
- B. RELOCATE EXISTING LIGHTS & SUPPLY AIR, BOTH RESTROOMS (SEE PLAN.)

2b

**REFLECTED CEILING PLAN**

SCALE : 1/4" = 1'-0"

PROJECT:

**MMFA**  
**3600 S. GESSNER, SUITE 110**  
3600 SOUTH GESSNER, SUITE 110, HOUSTON, TEXAS

**JIM GWIN ARCHITECTS, INC.**  
3100 EDLOE  
HOUSTON, TEXAS 77027



SUPPLEMENTAL DRAWING FOR

SHEET NO.

**2B**

DATE:

6/02/2009

DRAWING NO.

**02B**

PLAN KEY NOTES:

- ① RELOCATED 36" WIDE DOOR, FRAME & HARDWARE. HARDWARE TO INCLUDE CLOSER & TRIMCO PUSH/PULL
- ② MILLS TOILET PARTITION. MANUF. BY BRADLEY, SERIES 400 SENTINEL, OVERHEAD BRACED; COLOR: BLACK, M-250.
- ③ AJ WASHROOM ACCESSORIES (OR EQUAL). STAINLESS STEEL HANDS FREE ROLL TOWEL DISPENSER & WASTE RECEPTACLE U6104EA 12-3/4"W x 52-1/2"H x 9-3/4"D WALL OPENING. MOUNT PER ADA WITH DISPENSER AT 47" A.F.F. MAX.
- ④ UNDERCOUNTER MOUNT SOAP DISPENSER, BOBRICK B-922 OR EQUAL
- ⑤ INSTALL NEW STROBE AND EMERGENCY LIGHT (EELP MODEL EM-2B). TIE STROBE LIGHT INTO FIRE ALARM, IF PRESENT.
- ⑥ ADDED FLOOR DRAIN WITH TRAP PRIMER. PROVIDE SCHLUTER KERDI-DRAIN GRATE ASSEMBLY. SEE FINISH PLAN FOR DRAIN LOCATION.
- ⑦ SLOPE FLOOR TO DRAIN AT 1/4" PER 1'-0" AS SHOWN.
- ⑧ RELOCATED WALL MOUNTED AIR FRESHNER DEVICE.
- ⑨ RELOCATED WALL MOUNTED TOILET SEAT COVER DISPENSER.

PLUMBING FIXTURES:

TOILET: AMERICAN STANDARD FLOOR MOUNTED RIGHT WIDTH ELONGATED RIGHT HEIGHT FLUSH VALVE TOILET 3641.128  
TOP SPUD WITH SLOAN ROYAL MODEL III FLUSHOMETER.

URINAL ADA: KOHLER K5016-ET-0 DEXTER ELONGATED URINAL WITH TOP SPUD INLET WITH SLOAN SOLIS MODEL 8186  
URINAL SOLAR POWERED FLUSHOMETER.

RESTROOM SELF-RIMMING SINK: KOHLER, PENNINGTON MODEL 2196-4-0 WITH PEERLESS BRUSHED NICKEL SINGLE  
HANDLE FAUCET MODEL P88620-BN-D, WITH STRAINER IN LIEU OF POP-UP.

PROVIDE SOLID IN-WALL SOLID WOOD BLOCKING FOR ALL GRAB BARS, URINAL SCREEN, AND TOILET ACCESSORIES.

COVER PLATES FOR CLEANOUTS SHOULD BE INSTALLED. THE COVE TILE BASE NEEDS TO BE INSTALLED PRIOR TO TO THE FLOOR TILE SO THE COVE ALIGNS WITH THE TOP OF THE FLOOR TILE. ALIGN FLOOR, BASE AND WALL TILE JOINTS. MAKE SURE VISIBLE EDGES OF WALL TILE ARE BEVELED, CLEAN, NEAT AND SEALED TO THE WALL. RESET FLOOR DRAINS TO MATCH NEW FINISH FLOOR. INSURE THAT THE THICKNESS OF THE 3"x3" BLACK ABSOLUTO GRANITE IS FLUSH WITH THE TILE. YOU MAY NEED TO BUY PRE-CUT TILES TO GET THIS GAUGE MATERIAL, BUT DAL TILE DOES HAVE IT.

SUBMITTALS ARE REQUIRED FOR ALL MATERIALS TO BE USED ON THE PROJECT, AND MUST BE ACCEPTED PRIOR TO PURCHASE. EXISTING MOTION DETECTOR SWITCHES, EXHAUST FANS, STROBE LIGHTS, ETC. MAY BE RE-USED, SUBJECT TO APPROVAL

# 03 KEY PLAN NOTES

PROJECT:

**MHRA**  
**3600 S. GESSNER, SUITE 110**  
3600 SOUTH GESSNER, SUITE 110, HOUSTON, TEXAS



**JIM GWIN ARCHITECTS, INC.**  
3100 EDLOE SUITE 320  
HOUSTON, TEXAS 77027 (713) 529-6262

SUPPLEMENTAL DRAWING FOR:

SHEET NO.

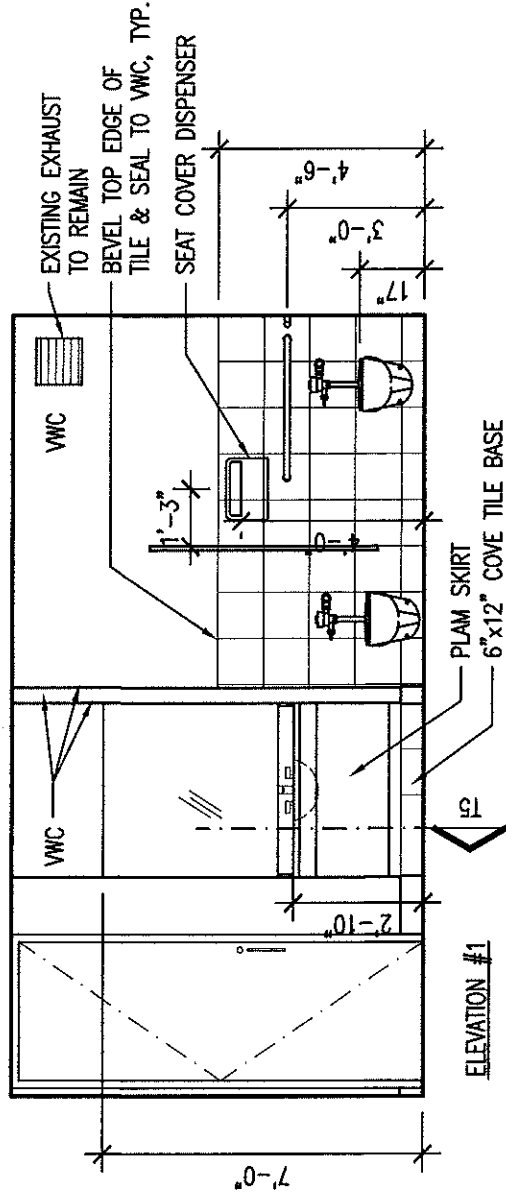
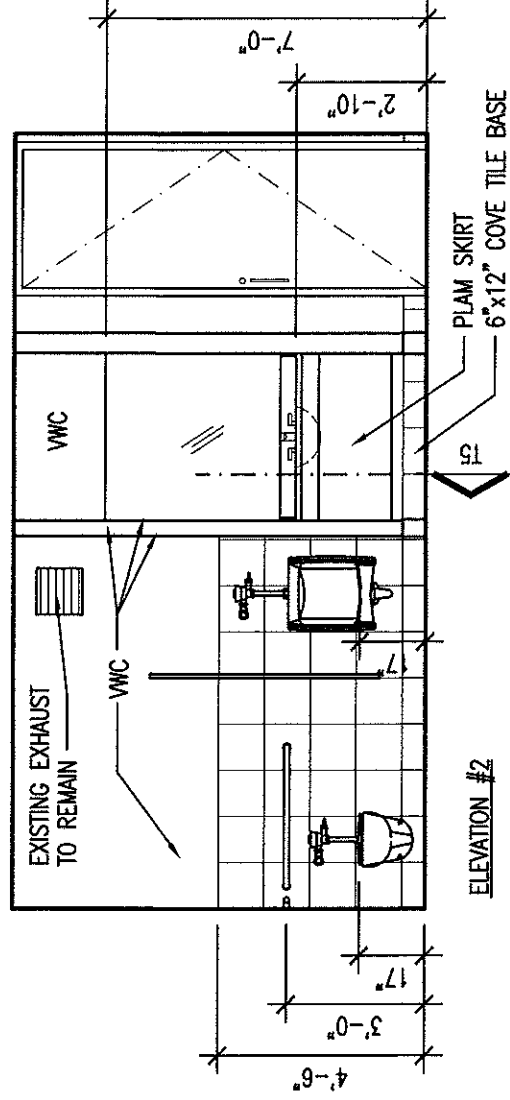
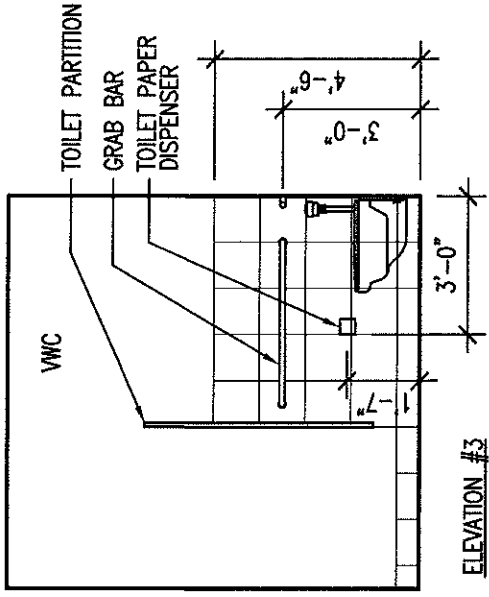
**3**

DATE:

6/02/2009

DRAWING NO.

**03**



PROJECT:

**M-MRA**  
**3600 S. GESSNER, SUITE 110**  
 3600 SOUTH GESSNER, SUITE 110, HOUSTON, TEXAS



**JIM GWIN ARCHITECTS, INC.**  
 3100 EDLOE  
 HOUSTON, TEXAS 77027

SUPPLEMENTAL DRAWING FOR

SHEET NO.

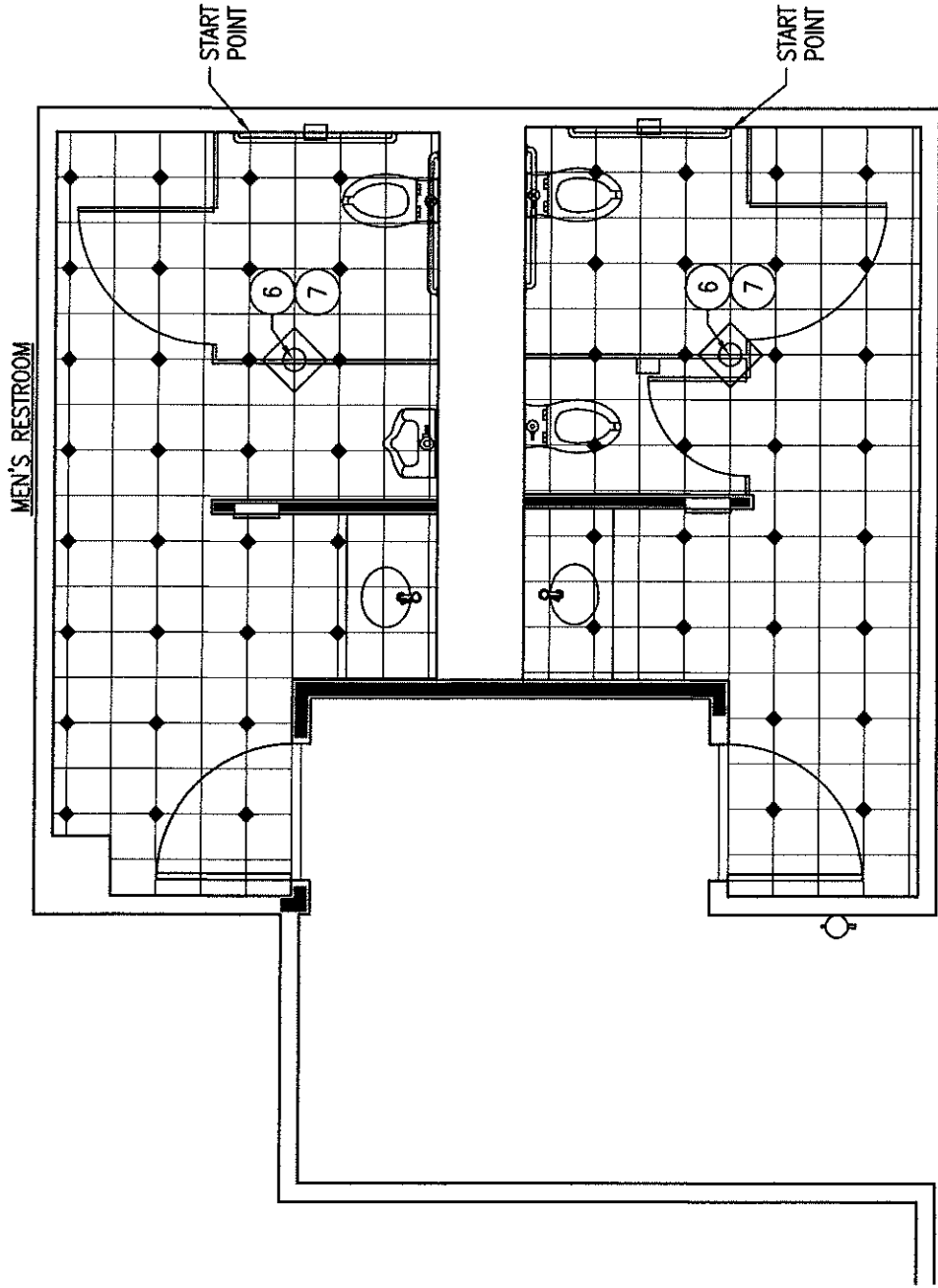
**4**

DATE:

6/02/2009

DRAWING NO.

**04**



ACCENT TILES

DAL-TILE  
 DT 1-08, CN31-3  
 3 x 3 BLACK  
 ABSOLUTO GRANITE

FIELD TILES

DAL-TILE  
 DT CP 85-12 PORCELAIN  
 12 x 12 TILE  
 4" MATCHING COVE BASE

WOMEN'S RESTROOM

GROUT

LATICRETE 1500 SANDED GROUT WITH  
 LATICRETE 1776 GROUT ENHANCER  
 WITH MICROBAN. SEAL  
 GROUT JOINTS WITH GROUT SEALER  
 BY MIRACLE SEALANTS COMPANY

NOTE:

RESTROOM COUNTERTOPS: PIONITE SE101-Z ASHWOOD BLACK,  
 D494-60 ANTIQUE COPPER LS SKIRT & MODESTY PANEL. (SUBMIT SAMPLES)

WALLCOVERING TO BE SYMPHONY OVERTURE SUITE, COLOR: AMBER.  
 J. JOSEPHSON, INC., AVAILABLE THRU NATIONAL WALLCOVERING, TEL. 1-800-222-1028

BASE: 1"x6" COVE BASE FOR OUTSIDE CORNERS. VISIBLE EDGES OF TILES TO BE SEALED NEAT AND  
 TIGHT TO WALL. OUTSIDE CORNERS OF WALL TILES TO BE GROUTED AT 45 DEGREES OR LAPPED WITH  
 OUTSIDE TILE EDGE BEVELED.

05

05 FINISH PLAN

SCALE : 1/4" = 1'-0"

PROJECT:

**MHRA**  
**3600 S. GESSNER, SUITE 110**  
 3600 SOUTH GESSNER, SUITE 110, HOUSTON, TEXAS



**JIM GWIN ARCHITECTS, INC.**  
 3100 EDLOE  
 HOUSTON, TEXAS 77027

SUPPLEMENTAL DRAWING FOR:

SHEET NO.

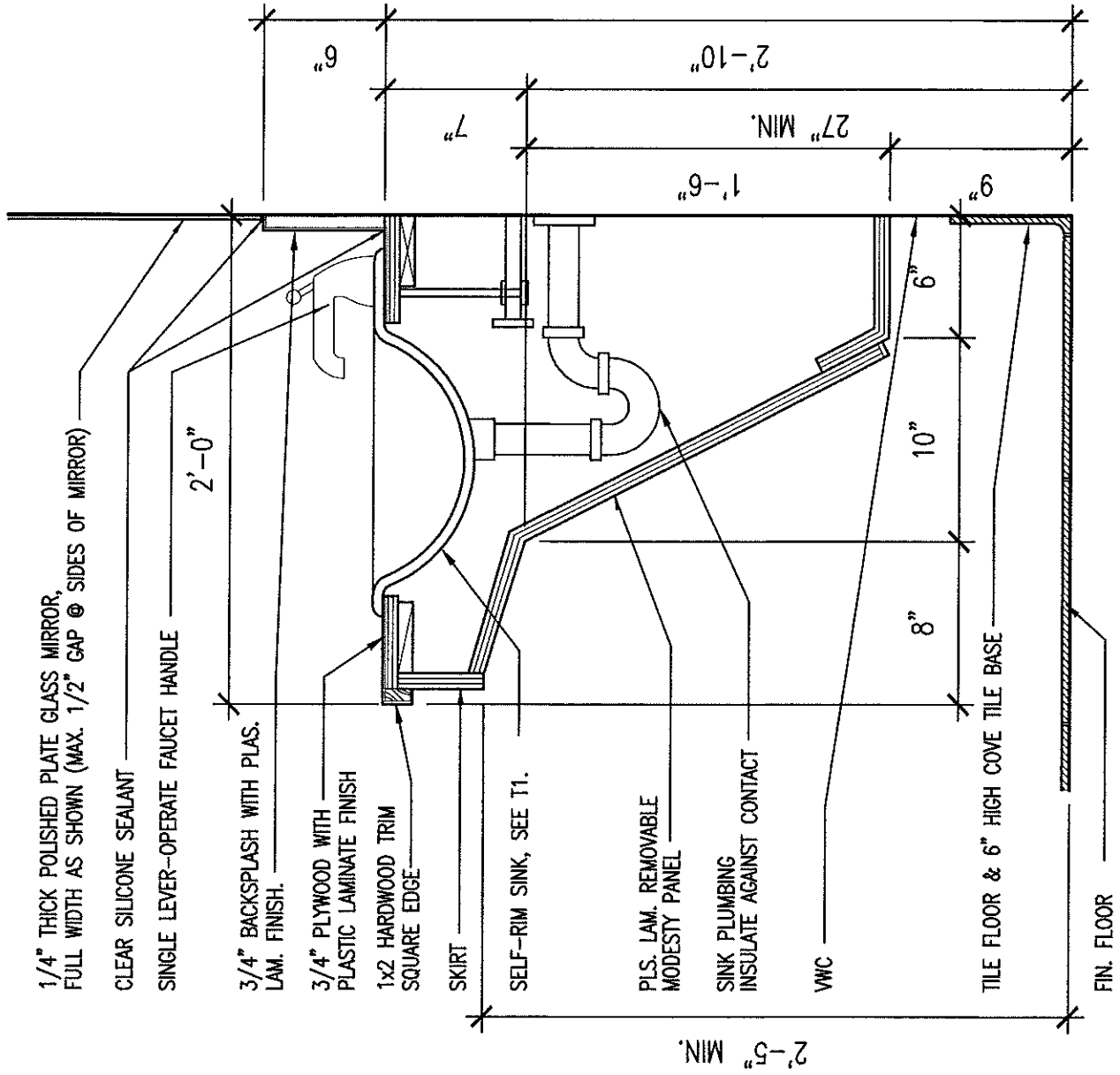
5

DRAWING NO.

05

DATE:

5/29/2009



# T5 HAND LAVATORY DETAIL

SCALE 1-1/2"=1'-0"

PROJECT:

**MHRA**  
**3600 S. GESSNER, SUITE 110**  
 3600 SOUTH GESSNER, SUITE 110, HOUSTON, TEXAS



**JIM GWIN ARCHITECTS, INC.**  
 3100 EDLOE  
 HOUSTON, TEXAS 77027

SUPPLEMENTAL DRAWING FOR:

SHEET NO.

6

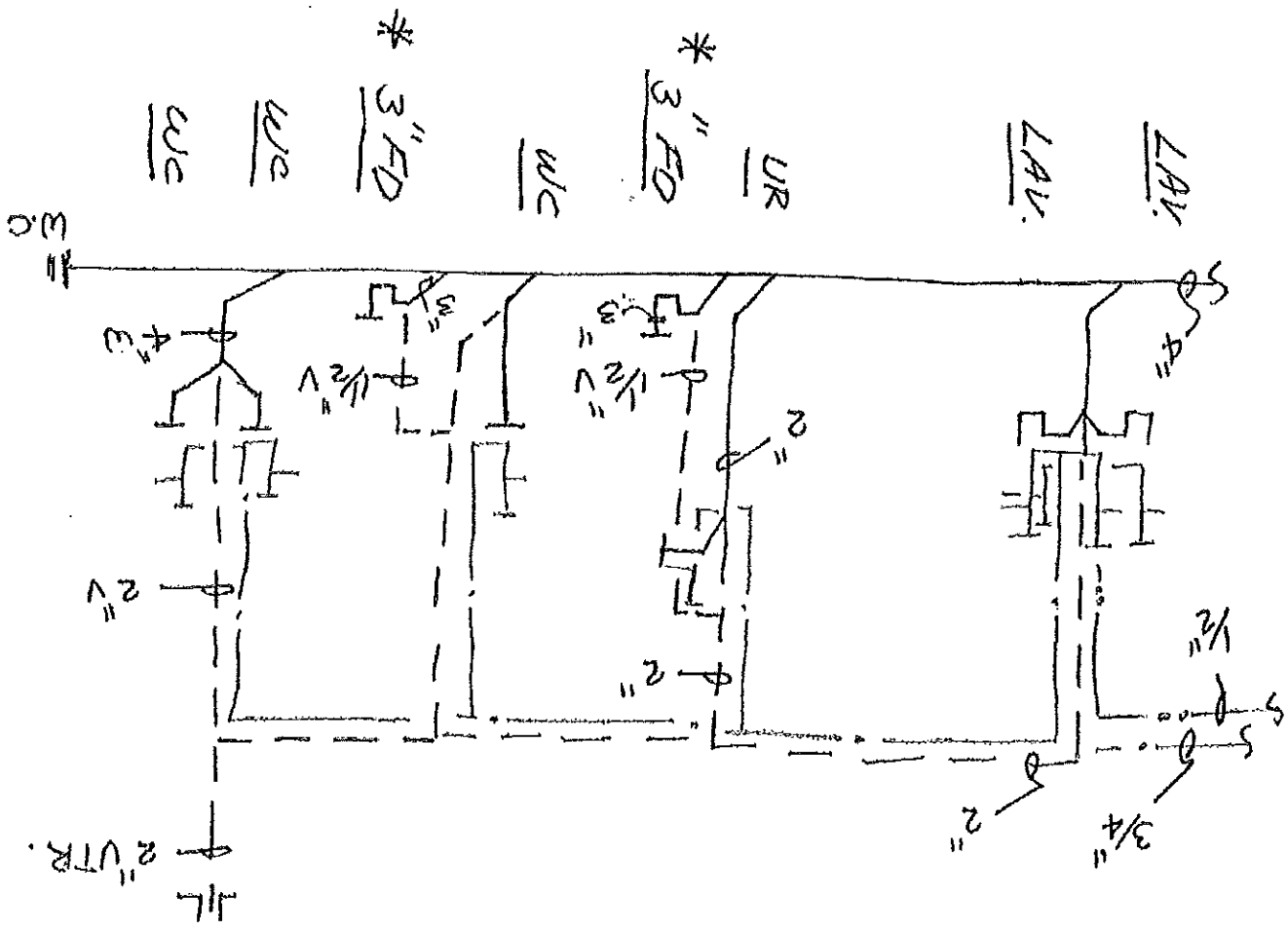
DATE:

5/28/2009

DRAWING NO.

06

\* ADDED 3" F.D. PROVIDE 1/2" VENT & TRAP SEAL AS APPROVED BY LOCAL CITY ORDINANCES. THE NEW F.D.'S TO EXISTING S.S. VERIFY ALL EXISTING PIPES, SIZES, SHOCK ABSORBERS AND OTHER EXISTING CONDITIONS.



PROJECT:

**M/MFA**  
**3600 S. GESSNER, SUITE 110**  
 3600 SOUTH GESSNER, SUITE 110, HOUSTON, TEXAS

**JIM GWIN ARCHITECTS, INC.**  
 3100 EDLÖE SUITE 320  
 HOUSTON, TEXAS 77027  
 (713) 529-6262

SUPPLEMENTAL DRAWING FOR

SHEET NO.

7

DRAWING

DATE:

5/28/2009

7