

MECHANICAL DEMOLITION KEYED NOTES

- A CONTRACTOR SHALL DISCONNECT ELECTRICAL POWER FROM THE EXISTING UNIT TO PREPARE FOR REMOVAL OF THE EXISTING AIR HANDLING EQUIPMENT. WALL MOUNTED DISCONNECT AND VARIABLE SPEED DRIVE WILL BE LEFT IN PLACE FOR REUSE WITH NEW AHU.
- B CONTRACTOR SHALL DISCONNECT EXISTING CHILLED WATER SUPPLY AND RETURN BRANCH PIPING TO PREPARE FOR REMOVAL OF THE EXISTING AHU. BRANCH PIPING WILL REMAIN IN PLACE TO PROVIDE CHILLED WATER FLOW TO THE NEW UNIT.
- C ONCE THE ELECTRICAL POWER AND CHILLED WATER PIPING ARE DISCONNECTED, CONTRACTOR SHALL DISASSEMBLE THE EXISTING AIR HANDLING UNIT AND REMOVE FROM THE MECHANICAL ROOM. CONTRACTOR SHALL BE RESPONSIBLE FOR REMOVING THE EXISTING UNIT FROM THE ROOM AND THE SITE. CONTRACTOR SHALL COORDINATE DISPOSAL OF THE EXISTING UNIT WITH THE FACILITY MANAGER.
- D ONCE THE EXISTING AHU IS REMOVED FROM THE MECHANICAL ROOM, CONTRACTOR SHALL CLEAN AND REPAIR THE EXISTING HOUSE KEEPING PAD AS REQUIRED TO PREPARE PAD FOR MOUNTING THE NEW AIR HANDLING UNIT.

MECHANICAL KEYED NOTES

- 1 CONTRACTOR SHALL SUPPLY AND INSTALL NEW AIR HANDLING UNIT AHU-2-SW ON MODIFIED HOUSEKEEPING PAD. (SEE SCHEDULE FOR UNIT SIZE ON SHEET M-4.00 AND PAD DETAIL ON SHEET M-4.10). CONTRACTOR SHALL PROVIDE ALL REQUIRED SHEET METAL AND FABRIC TRANSITIONS REQUIRED TO CONNECT NEW UNIT TO EXISTING DUCT CONNECTIONS.
- 2 CONTRACTOR SHALL RECONNECT EXISTING CHILLED WATER SUPPLY AND RETURN BRANCH CONNECTIONS TO NEW AIR HANDLING UNIT. CONTRACTOR SHALL PROVIDE ALL REQUIRED FITTINGS TO COMPLETE THE CONNECTION.
- 3 CONTRACTOR SHALL CLEAN AND REPAIR EXISTING THREE-WAY VALVE AS REQUIRED TO PREPARE VALVE TO CONTROL CHILLED WATER FLOW TO NEW CHILLED WATER COIL.
- 4 CONTRACTOR SHALL REUSE EXISTING ELECTRICAL CIRCUIT, WALL MOUNTED DISCONNECT AND VARIABLE FREQUENCY DRIVE TO ENERGIZE NEW AIR HANDLING UNIT.
- 5 CONTRACTOR SHALL SUPPLY AND INSTALL NEW AIR HANDLING UNIT AHU-2-NW ON EXISTING HOUSEKEEPING PAD. (SEE SCHEDULE FOR UNIT SIZE ON SHEET M-4.00 AND PAD DETAIL ON SHEET M-4.10). CONTRACTOR SHALL PROVIDE ALL REQUIRED SHEET METAL AND FABRIC TRANSITIONS REQUIRED TO CONNECT NEW UNIT TO EXISTING DUCT CONNECTIONS.

EQUIPMENT MOVEMENT GENERAL NOTES

- 1 THE CONTRACTOR SHALL BE RESPONSIBLE FOR DELIVERING THE NEW EQUIPMENT TO EACH FLOOR AND MOVING THE VARIOUS COMPONENTS INTO THE PROPER MECHANICAL EQUIPMENT ROOM. ONE OF THE PASSENGER ELEVATORS SHALL BE UTILIZED TO MOVE EQUIPMENT. CONTRACTOR MUST COORDINATE SELECTION OF THE ELEVATOR AND SCHEDULING WITH THE FACILITY MANAGER.
- 2 CONTRACTOR SHALL UTILIZE THE DEFINED CORRIDORS WHEREVER POSSIBLE TO MOVE EQUIPMENT FROM THE DESIGNATED ELEVATOR TO THE VARIOUS EQUIPMENT LOCATIONS.
- 3 IT SHALL BE THE CONTRACTORS RESPONSIBILITY TO PROTECT THE BUILDING FINISHES FOR THE ELEVATORS, WALLS, FLOORS AND CEILINGS WHILE MOVING EQUIPMENT. ANY DAMAGE ATTRIBUTED TO THE CONTRACTOR WILL BE THE RESPONSIBILITY OF THE CONTRACTOR TO REPAIR AT HIS OR HER OWN EXPENSE.
- 4 CONTRACTOR SHALL DEVELOP HIS OR HER OWN EQUIPMENT MOVEMENT PLAN TO SHOW HOW EQUIPMENT WILL BE MOVED INTO PLACE. IF EXISTING DOOR FRAMES OR WALLS MUST BE REMOVED TO MOVE EQUIPMENT INTO THE MECHANICAL SPACES, THE COST FOR REMOVAL AND REPLACEMENT OF THE MATERIALS SHALL BE INCLUDED IN THE CONTRACTORS PROPOSAL.

1 LEVEL 2 AIR HANDLING UNIT LAYOUT
SCALE: 1/8" = 1'-0"

EXISTING DUCT CONNECTIONS FOR UNIT AHU-2-NW SHALL BE DISCONNECTED TO ALLOW REMOVAL OF THE OLD EXISTING UNIT. ONCE NEW UNIT IS SET, THE CONTRACTOR SHALL FABRICATE AND INSTALL NEW DUCT CONNECTIONS TO ATTACH NEW UNIT TO THE EXISTING AIR DISTRIBUTION DUCTWORK.

EXISTING DUCT CONNECTIONS FOR UNIT AHU-2-SW SHALL BE DISCONNECTED TO ALLOW REMOVAL OF THE OLD EXISTING UNIT. ONCE NEW UNIT IS SET, THE CONTRACTOR SHALL FABRICATE AND INSTALL NEW DUCT CONNECTIONS TO ATTACH NEW UNIT TO THE EXISTING AIR DISTRIBUTION DUCTWORK.

ELECTRICAL LOAD ANALYSIS
ALL NEW EQUIPMENT ON THIS LEVEL WILL HAVE THE SAME THE SAME MOTOR HP AS THE PREVIOUS UNIT AND WILL UTILIZE THE SAME ELECTRICAL CIRCUITS, DISCONNECTS AND VARIABLE FREQUENCY DRIVES TO POWER THE UNITS. THERE WILL BE NO INCREASE TO THE ELECTRICAL LOAD ON THIS LEVEL.

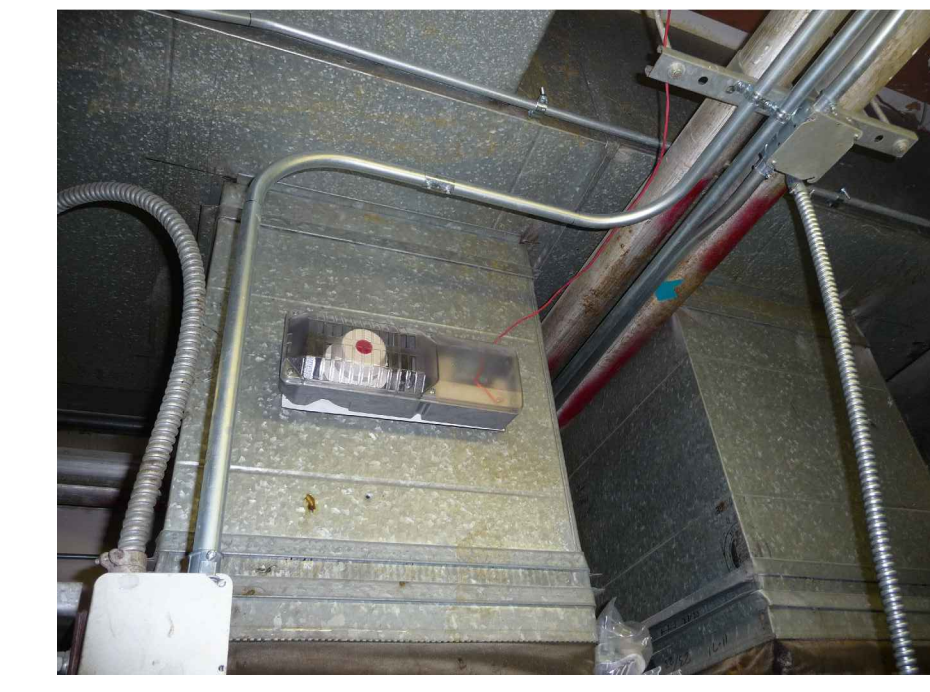
ELECTRICAL GENERAL NOTE
CONTRACTOR SHALL BE RESPONSIBLE FOR RE-INSTALLING ALL AHU SMOKE DETECTORS AND RELATED SAFETY INTERLOCKS FOR EACH AIR HANDLING UNIT REPLACED. ALL SAFETY DEVICES MUST BE FULLY FUNCTIONAL.

GENERAL NOTES

- 1. THE DATA PROVIDED IS BASED AN THE BEST AVAILABLE INFORMATION. CONTRACTOR MUST FIELD VERIFY ALL EXITING CONDITIONS PRIOR TO SUBMITTING HIS OR HER PROPOSAL.
- 2. THE MCQUAY AIR HANDLING UNITS DESCRIBED IN THE NEW EQUIPMENT SCHEDULE ARE MODULAR TYPE UNITS THAT ARE CONFIGURED WITH A LOWER COIL SECTION, WITH A REAR FILTER RACK, AND AN UPPER FAN CABINET. THESE COMPONENT MODULES ARE TOO WIDE FOR THE AVAILABLE DOOR OPENINGS FOR THE MECHANICAL ROOMS, SO THE CONTRACTOR MUST DISASSEMBLE THE MODULAR COMPONENTS TO MOVE THEM INTO THE MECHANICAL ROOMS AND THEN RE-ASSEMBLE THE UNITS IN PLACE ON THE HOUSE-KEEPING PAD. THE COST FOR THIS ADDITIONAL DISASSEMBLY/RE-ASSEMBLY MUST BE COVERED IN THE PROPOSAL.
- 3. ANY EQUIPMENT PROPOSED OTHER THAN THE MCQUAY UNITS SCHEDULED MUST ALSO BE CAPABLE OF DISASSEMBLY TO ALLOW MOVEMENT INTO THE MECHANICAL ROOMS.
- 4. SOME MODIFICATIONS WILL BE REQUIRED FOR THE EXISTING HOUSE-KEEPING PADS TO PROVIDE REQUIRED SUPPORT FOR THE NEW UNITS. REFER TO PAD DETAILS ON SHEET M-3.00 FOR DETAILS.



2 AHU-2-NW DUCT CONNECTIONS
SCALE: NO SCALE



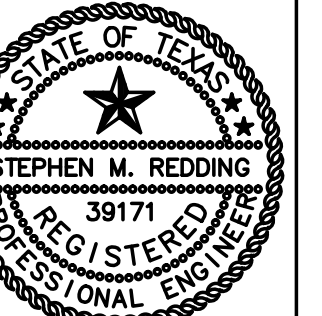
4 TYPICAL AHU SMOKE DETECTOR
SCALE: NO SCALE

3 AHU-2-SW DUCT CONNECTIONS
SCALE: NO SCALE

ISSUED FOR PRICING

AIR HANDLING UNIT REPLACEMENT PROJECT
MMRA BUILDING, 7011 SW FREEWAY
HOUSTON, TX

REDDING
LINDEN
BURR
 Texas Registered Engineering Firm 15111



DATE: 01/10/2011
 PROJECT #: 10487.01
 SHEET #:

ME-2.20