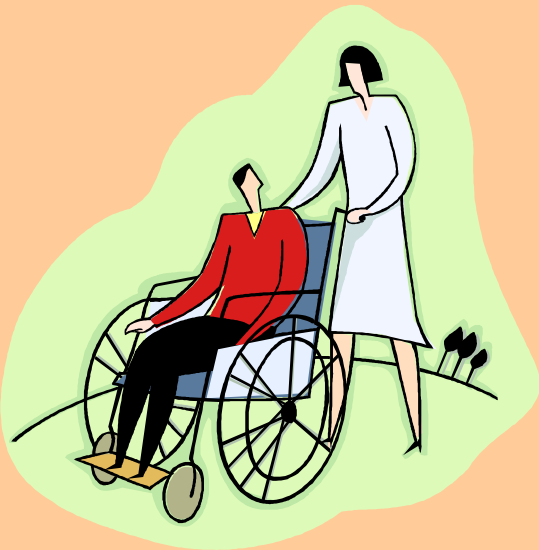


Elite Residential Services is committed to enhancing the lives of people with disabilities. We seek to ensure that the humanity and dignity of each person we serve are respected, their rights are protected, and they make choices about their lives just like people without disabilities.

Through our Quality Assurance, Consumer Satisfaction and other management systems, Elite Residential Services successfully provides quality services and training that benefit program participants, their families, and the community.



# Elite Residential Services

**Elite Residential Services**  
**7610 Twin Hills**  
**Houston, Texas 77071**  
**Phone (713) 988- 5550**  
**FAX (713) 988-5027**

**Promoting integrity,  
Building lives, Reaching**

○ ○ ○ **Goals** ○



○ ○ ○ ○ ○ ○

**HCS HOME & COMMUNITY-  
BASED SERVICES**



## **HCS PROGRAM**

The Home and Community based Services (HCS) program is an individualized alternative to traditional facility-based or institutional care. This Medicaid waiver program supports rather than supplants the family and enables people to pursue their dreams in their own homes and communities.

Once you have contacted your local Mental Retardation Authority and done the paperwork to be placed on a waiting list for HCS, when an opening becomes available you will be asked to visit potential providers before making a decision.

## **SERVICES AVAILABLE**

### **SUPPORTIVE HOME LIVING**

Participants reside at home with their families and receive three to six hours of services each day based on their needs. Services include assistance with meal planning, activities of daily living, transportation, and training or habilitation in addition to any day habilitation received.

### **RESPIRE**

Respite allows families who are the primary caregivers for their family member to have free time away from home. Program participants may stay in a residence or other setting provided by [Elite Residential Services](#) or receives services in their homes.

### **RESIDENTIAL SUPPORT**

Participants live in a home in which services are provided by a rotating schedule of employees who are active in the home 24 hours a day, seven days a week. Services include assistance with activities of daily living, meal planning and preparation, transportation, housekeeping, and participating in community activities.

### **SUPERVISED LIVING**

This set of services is similar to Residential Support, except that service providers on the overnight shift are on the same sleep schedule as the residents, though available to respond to their needs if necessary.

### **FOSTER/ COMPANION CARE**

A foster/ companion provider lives in the same residence as program participants on a continuous basis, rather than a shift basis.

### **NURSING**

To ensure general health and well-being, [Elite Residential Services](#) nurses monitor health and medical conditions, administer and monitor medications, make referrals for appropriate medical services, and provide medical treatment and other healthcare procedures ordered by a physician.

### **COUNSELING AND THERAPY**

Physical, occupational, speech/ language and audiology therapy are available, under the direction of qualified therapists. Psychological, social, and dietary services are provided to develop social skills and ensure proper nutrition.

### **DAY HABILITATION**

These services enhance social, personal, and daily living skills and are specifically designed to meet each program participant's individual needs. Services include activities ranging from money management training to communication skill development. Habilitation is provided during the day in a special facility, and many skills are reinforced by providers in the participant's residence.

### **HOME MODIFICATIONS, ADAPTIVE AIDS**

Minor structural modifications to homes improve access, based on the individual's disabilities. Adaptive aids include devices such as wheelchairs, portable ramps, computer and appliances that help people live more independently.

### **CASE MANAGEMENT**

Each person receiving services from Elite Residential Services under the HCS program has a case manager who coordinates the development and implementation of the Individual Service Plan and the Individual Plan of Care, integrates services delivered and records each person's progress.